

# 2021 Annual Stormwater Report

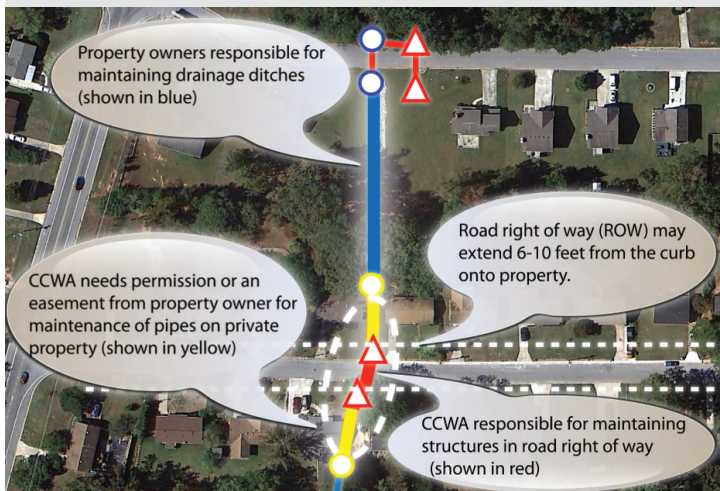


## Your Stormwater Dollars At Work

The Clayton County Water Authority's Stormwater Utility (SWU) is responsible for stormwater management activities for unincorporated Clayton County and the cities of Forest Park, Jonesboro, Lake City, Lovejoy, Morrow and Riverdale.

These activities include Construction Plan Reviews and Inspections, Floodplain Management, Illicit Discharge/Illegal Connection Inspections and maintenance of stormwater infrastructure within the road right-of-way.

This annual report is produced to show a summary of the activities that have been performed by Clayton County Water Authority's Stormwater Utility over the past year and how your Stormwater dollars are being used.



**This diagram shows the level of service provided by CCWA's Stormwater Utility.**



## Stormwater Reaches 80,000 People Across GA in GPB Live Exploration

On May 6, members of CCWA's stormwater staff were featured in Georgia Public Broadcasting's (GPB) Live Exploration of Water. The program was a collaborative effort of GPB, the Metropolitan North Georgia Water Planning District, and several water utilities across the state of Georgia. Over 80,000 students, teachers and parents learned about the importance of protecting waterways, how water is treated, and the water cycle. To watch the program, visit [gpb.org/water](http://gpb.org/water).



## Household Hazardous Waste Collection Day

### September

CCWA held its first community outreach event of 2020 on Saturday, September 26 with Household Hazardous Waste Collection Day. The event was postponed due to the shelter in place order.

The gate opened early at 9:30 a.m. with 502 vehicles serviced when it closed at 2 p.m. to comply with COVID-19 guidelines, we did not gather information from residents or hand out educational literature. CCWA's Stormwater staff worked with their masks on and maintained social distancing while manning the different stations. Many residents thanked CCWA staff for hosting this event.

### March

In March, CCWA returned to its regular spring schedule and held the annual Household Hazardous Waste Collection Day on Saturday, March 27. We hit a new record, servicing 540 vehicles during the event. CCWA continued to comply with social distancing guidelines, not gathering information from residents or handing out educational literature. We appreciate our community for helping keep our streams and creeks free of hazardous waste.







## Stormwater Maintenance Crews Completed Nearly 2,200 Work Orders During FY 2020-21

The SWU's Engineering Technician and Maintenance Crews work as a team to provide quality service when it comes to responding to customer calls. This team was committed to maintaining their level of service even as the COVID-19 Pandemic continued. On average, a customer complaint was responded to within twenty-four (24) hours. When a customer calls with a stormwater issue, our Stormwater Engineering Technician is dispatched to check out every issue or complaint. During Fiscal Year 2020-21, he responded to over 906 customer related calls.

Part of the maintenance activity includes an aggressive inspection program. This helps our staff determine potential problem locations, as well as being compliant with our Stormwater Permit. Using both internal staff and outside contractors, CCWA inspected the following structures over the past year:

- Approximately 4,800 catch basin and inlets
- Approximately 363,000 linear feet (68.8 miles) of storm drains
- Approximately 163,000 linear feet (30.9 miles) of ditches

The Stormwater Maintenance staff of 18 employees (2 pipe repair crews, 1 grading crew and 1 vacuum truck crew) addressed 2,163 work orders. Activities from these completed work orders represent:

- Approximately 27,000 linear feet (5.1 miles) of storm drain lines
- Approximately 23,500 linear feet (4.5 miles) of graded ditches
- Approximately 500 cleaned/repaired catch basins

Maintenance costs for this work completed between May 2020 and April 2021 were roughly \$2.4 million. In addition to the maintenance work orders, CCWA solicited the help of outside construction firms to perform larger-scaled Capital Improvement Projects (CIP). These projects include repair methods of "Remove and Replace" (R/R), as well as a newer technology called "Cured-In-Place Piping" (CIPP).

Using both methods, CCWA performed 100 large-scaled CIP's throughout the county last year. The 81 R/R and 19 CIPP jobs resulted in costs slightly under \$4.4 million. Combined, approximately 17,094 feet (3.24 miles) of pipe were replaced/renewed using these methods.



## Stormwater Utility Services include:

- Maintenance, repair and replacement of stormwater infrastructure within the road right-of-way.
- Floodplain management
- Construction plan reviews and inspections
- Illicit discharge/illegal connection inspections
- Public education/public involvement
- Watershed improvement activities

## Responsibilities of property owners and local jurisdictions:

- Remove debris from ditches or yards
- Maintain drainage ditches on private property
- Maintain or clean curb and gutter
- Clean or mow roadside ditches



## Top 3 Constituent Concerns

### What are Stormwater Utility fees used for?

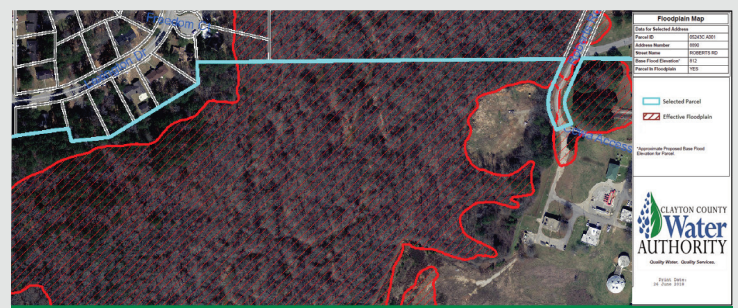
Stormwater utility fees are dedicated exclusively to stormwater management activities.

### Who is responsible for neighborhood detention and retention pond maintenance?

The Homeowners Association or the developer are typically responsible. For unfinished subdivision ponds, the developer or the bank holding the lots is responsible.

### Who is responsible for overflowing stormwater pipes or inlets?

Overflows from stormwater infrastructure within is the responsibility of the Stormwater Utility. All other overflows are the responsibility of the property owner or another jurisdiction.



## Do you know your property's Floodplain status?

Flood insurance rate maps (FIRM's), also known as Floodplain Maps, went into effect on June 2017 for properties located in Clayton County. After years of extensive studies and analysis, CCWA revised the County's Floodplain Maps, as guided by FEMA. The County's maps were digitally updated in 2007, but several other factors required additional field studies and desktop engineering to bring the maps up to date.

To determine your floodplain status, you may visit CCWA's Floodplain Management at <http://www.ccwa.us/floodplain-mapping>. On that page, you will find information about Floodplain Management. Click the link that follows the text, "To check the status of your property in Clayton County". From there, take the following steps:

1. Enter your information on the disclaimer form and "Accept" to continue.
2. You will be taken to an internal Floodplain Mapping page where you will begin your search.
3. Click "Begin Search".
4. Enter your address number and street name. Click "Run Search"
5. Your personalized floodplain map will appear.

If you need additional assistance, please contact CCWA's Floodplain Division at [ccwa\\_floodplain@ccwa.us](mailto:ccwa_floodplain@ccwa.us) or at 770.302.1768.





## Cured in Place Piping Method Used to Renew Over 1,000 feet of Storm Drains | Magnolia Drive - Jonesboro | \$326,700

The Clayton County Water Authority's (CCWA) Stormwater Utility is required by the County's Stormwater Permit to inspect 20% of stormwater infrastructure (pipes, catch basins, ditches) on an annual basis. The County infrastructure is mainly within the roadways. In several cases, this infrastructure can begin within the roadway but extend off the roadway, onto residential private property. In cases where infrastructure extends off the roadway, CCWA is required to get permission from the property owner to inspect and possibly perform maintenance of that infrastructure.

During inspection activities, CCWA found over 1,000 feet of corrugated metal pipe (CMP) in poor condition. These pipes were 18", 21", 24" and 36" in diameter. Staff made an attempt to determine if renewing the pipe using the Cured In Place Pipe (CIPP) method was an option. CIPP is a method that allows a resin impregnated felt tube to be inserted in the existing pipe to create a new pipe once that product is cured by hot water or steam.

CIPP, in most cases, eliminates the need to excavate the existing pipe in traditional "open cut" methods. Meaning that final restoration activities are minimized. No need to restore landscaping/vegetation on private property, no need to restore concrete sidewalks, curbs, and driveway. This also assists in cases where residents have built private structures over the storm drains. Our team can perform the repair without the resident needing to move the structure.

All the work is performed inside the existing host pipe. The process is relatively quick. There may be some initial internal pipe repairs to be performed or an occasional point repair where a small segment of pipe needs to be repaired using convention means, but overall, the actual lining process for each pipe is 4 hours maximum.

CCWA procured the services of Granite Inliner, LLC. to perform this trenchless technology method to renew 271' of 18" CMP, 69' of 21" CMP, 317' of 24" CMP, and 346' of 36" CMP that was either within the Magnolia Drive right-of-way or directly connected to the right of way.



## Spotlight: Stormwater Vac Truck Crew, Kwame Gyimah and Chasten Burns

Meet CCWA Stormwater Equipment Operator Chasten Burns and Stormwater Crew Leader Kwame Gyimah. Chasten and Kwame work in our Stormwater Department operating our Stormwater Combination Vacuum-Jet Truck. This truck is like a huge vacuum cleaner on wheels. They work systematically through the county cleaning out catch basins and stormwater pipes to maintain proper water flow through the structures and pipes. They also respond to service requests initiated by our Call Center.

Roadway flooding can be caused by clogged catch basins. During heavy rain events, Chasten and Kwame are on the road making sure catch basins are open and working their vac truck magic on those that aren't.

The biggest challenge they face is finding a catch basin full of household and personal items. They find everything from electronic devices, needles, sofas, mattresses, bikes, balls, leaves and even guns. "We want to remind customers to never use a catch basin as a trash can. Think about us before you dump your trash in any catch basin!"



They like that their truck is not only used to handle their job requirements, but they are also pulled to help other crews in Stormwater complete their jobs. This gives Chasten and Kwame the chance to experience how the other Stormwater pipe crews work together on their jobs.

Chasten and Kwame also serve as CCWA Ambassadors. They are quite famous on the Career Day circuit here in Clayton County for their 'Career on Wheel's demonstrations where they show students how the truck vacuums up items and can spray water for many feet. #waterprofessional





## 2021 Rivers Alive Stream Cleanup Tentative Date – Saturday, October 23 10 A.M. – Noon

CCWA's Stormwater staff works throughout the year to educate residents about the damage stormwater pollution does to our local waterways and how they can prevent this pollution from making its way into our drinking water. This event gets residents involved in preserving and protecting our local waterways.

Community volunteers join CCWA volunteers at our annual stream cleanup event as we remove trash, litter and debris from one of our local streams or creeks. We will provide t-shirts, bags and gloves. Volunteers will need to wear a mask/face covering. This is a great volunteer opportunity for scouts, civic groups, church groups, environmental clubs and families.

Due to concerns surrounding COVID-19, we were unable to host a stream cleanup in 2020. We will confirm in September if we can hold a 2021 stream cleanup event. Check our website ([ccwa.us](http://ccwa.us)) and follow our Facebook (@ClaytonCountyWater) for updates.



## Connecting With Our Community

### Career Day Events

Stormwater staff participates in numerous Career Day events at Clayton County Public Schools. Through these events, staff connects with thousands of students to educate them about the damaging effects of stormwater pollution and what they can do to protect our water quality.

### Educational Programs - We're Project WET Certified!

In the Spring, we were able to have several of our CCWA Ambassadors receive training to become Project WET certified. Project WET uses an action-oriented approach to provide education on the value of water. Our Stormwater Ambassadors can develop programs with an urban watershed focus. We'd love to create a program that aligns with the Georgia Standards of Excellence & fits your student's needs! To request our participation at your school, please contact us at [CCWA\\_CommunityRelations@ccwa.us](mailto:CCWA_CommunityRelations@ccwa.us)

### Looking for a Speaker? Call Us

If you would like a Stormwater staff member to speak to your civic group or HOA, please call 770.960.6972.

### Find Us on You Tube: Clayton County Water Authority

CCWA has a You Tube channel that features educational videos on:

- Preventing stormwater pollution
- Finding and fixing leaks
- Proper disposal of fats, oils and greases
- and other topics

## Wetlands & Watershed Festival

In October 2020, CCWA used a different approach when hosting the Wetlands & Watershed Festival. We developed a full week of exciting programs that were held virtually and in small groups. Stormwater participated in the festival by hosting an in-person workshop for a small group, showing guests an Enviroscape model and talking about the importance of protecting our local watershed.



## Quality Water, Quality Service

1600 Battle Creek Road, Morrow, GA 30260  
Customer Service 770.960.5200 / [www.ccwa.us](http://www.ccwa.us)

## Connect with Us

- /ClaytonCountyWater
- /NewmanWetlandsCenter
- /ccwaslbe

- Clayton County Water Authority
- @Newman Wetlands Center
- @CCWA\_SLBE\_Biz
- [www.ccwa.us](http://www.ccwa.us)

## Board of Directors and Leadership

**Robin Malone**, Chair  
**Marie Barber**, Vice Chair  
**Rodney Givens**, Secretary/Treasurer

**John Westervelt**, Board Member  
**John Chafin**, Board Member  
**Dr. Cephus Jackson**, Board Member  
**Emma Godbee**, Board Member

**H. Bernard Franks**, General Manager  
**Keisha Thorpe**, Assistant General Manager  
**Teresa Worley**, Assistant General Manager